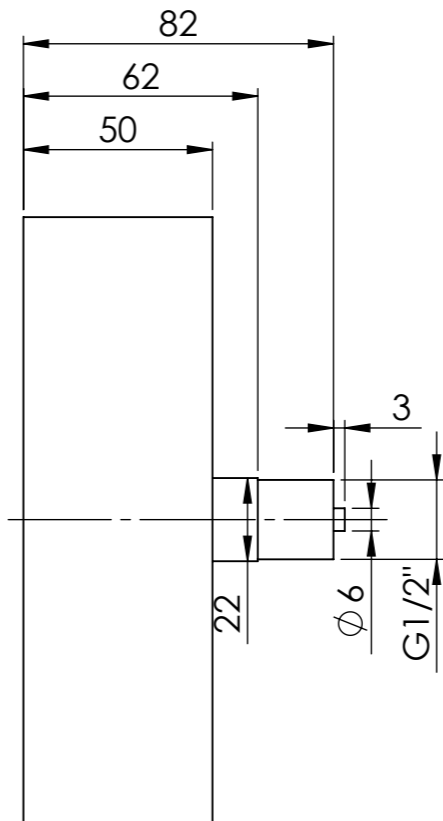
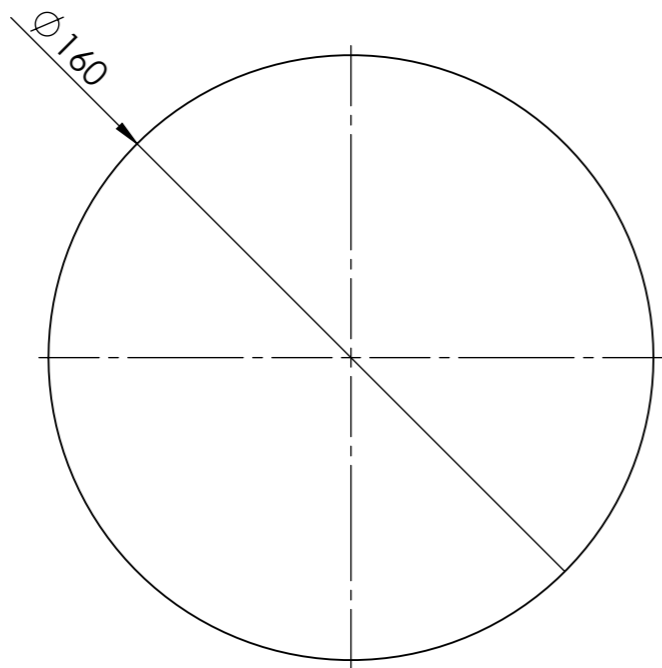


Manometry puszkowe



Opis rysunku

Manometr puszkowy KP 160, D411, fi160 mm, 0÷100 mbar, G1/2", ax, kl. 1,6

|                   |                            |                  |      |
|-------------------|----------------------------|------------------|------|
| Skala             | Data                       | Numer katalogowy | Rev. |
| 1:2               | 14.12.2022                 |                  |      |
| Jednostka<br>[mm] | Data rewizji<br>14.12.2022 |                  |      |
|                   |                            | 35 169 411       | 0    |



AFRISO Sp. z o. o. Szalsza, ul. Kościelna 7, 42-677 Czekanów  
tel. (32) 330-33-55 [www.afriso.pl](http://www.afriso.pl) e-mail: [zok@afriso.pl](mailto:zok@afriso.pl)