

Mounting instructions

Differential bypass valve DÜ

Lindenstraße 20
74363 Güglingen

Telephone +49 7135 102-0

Service +49 7135 102-211

Telefax +49 7135 102-147

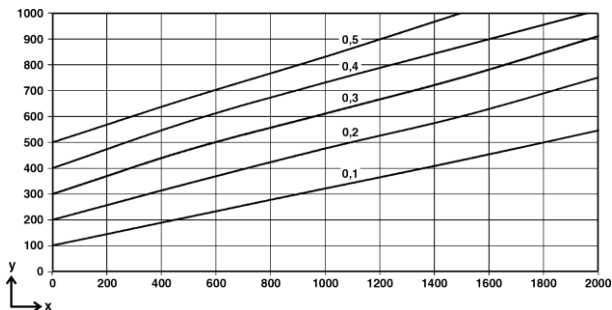
info@afriso.com

www.afriso.com

The differential bypass valve DÜ may only be installed in sealed heating systems as per EN 12828. It keeps the pump pressure at a constant level and helps to avoid flow noise during partial load operation. The differential bypass valve opens if the pumping pressure exceeds the value adjusted at the differential bypass valve.

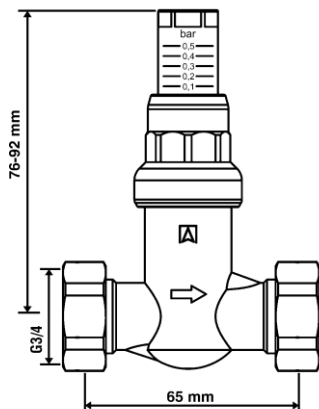
- Install the differential bypass valve in a bypass line between the flow and the return.

Parameter	Value
Operating temperature	Max. 95 °C (short-term max. 120 °C)
Operating pressure	Max. 6 bar
Differential pressure	Fully adjustable
# 42379	0,1 – 0,5 bar
# 42384	0,1 – 0,5 bar
# 42308	1 – 5 m H ₂ O
# 42460	1 – 5 m H ₂ O

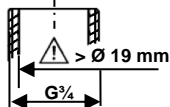
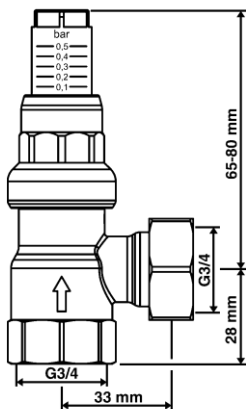


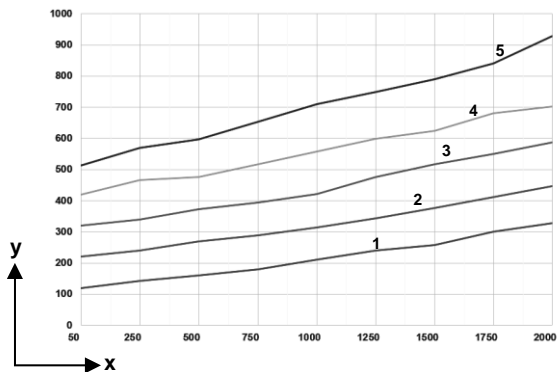
y differential pressure [mbar] x flow rate [l/h]

42384



42379





y differential pressure [mbar]

x flow rate [l/h]

42308

42460

