



AFRISO

AFRISO Sp. z o.o.
Szałsza ul. Kościelna 7
42-677 Czekanów
Poland
www.afriso.pl

Customer service
Tel. +48 330 33 55
Fax: +48 330 33 51
zok@afriso.pl

Zone valve AZV
2-way cut-off valve
3-way switching valve

Art.-Nr 16 442 00, 16 452 00, 16 443 00,
16 453 00, 16 642 00, 16 643 00

Fig 1. Dismounting actuator from valve

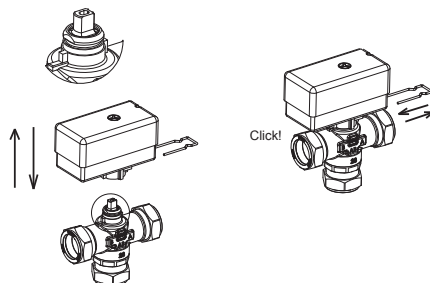


Fig 2. Possible mounting positions

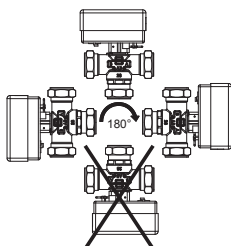


Fig 3. Manually adjusting the valve

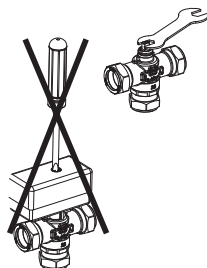
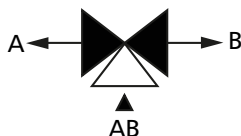


Fig 4. 3-way valve works as a switching valve with AB input and outputs A and B marked on the body



Technical data	
Parameter / piece	Value / description
Connections	external thread G $\frac{3}{4}$ " external thread G1"
Kvs: 2-way 3-way	11 m ³ /h 8 m ³ /h
Differential pressure	max 3 bar
Working pressure	max 10 bar
Time: opening / closing (2-way) switching (3-way)	12 s (90°) 8 s (60°)
Body	brass CW617N and CW614N
Internal valve element	PPS composite
Internal leakage	< 1% Kvs
Operating temperature range	5 ÷ 80°C (temporarily 90°C)
Ambient temperature	1 ÷ 60°C
Glycol concentration	max 50%
Power supply	230 V AC, 50 Hz
Power consumption	7 VA
Protection class	IP40
Control signal	2-point, SPST
Cable	3 x 0,75 mm ² , 1 m, insulated

Fig 5. Work parameters

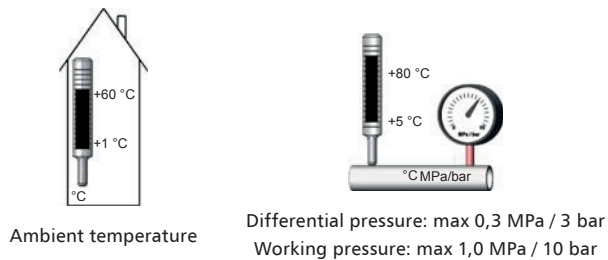


Fig 6. Electrical scheme

